



HD Brushless

Series 400

PRODUCT FEATURES

- **UNIQUE DUAL ROTOR BRUSHLESS CONSTRUCTION**

Extends the service life and increases durability by eliminating: Brushes, Slip Rings and the Rotating Winding.

- **AIR COOLED**

Air Cooled means eliminating oil lines, potential engine oil contamination and hazardous oil leaks.

- **CLEAN AIR DESIGN**

Engineered for superior reliability, designed to allow clean air to flow directly into the alternator. It is supplied with a "Maintenance Free" rear mounted air precleaner, making the 400 SERIES alternators a simple drop-In and a perfect "Debris Free" installation for all cradle mount applications without the need of additional hoses for ducting clean air supply.

- **HIGH OUTPUT**

Capable of producing 338 Amps @ 2000 rpm or more than 73% of its rated power at engine idle makes this an efficient alternator compatible with all industry E-Fan and Hybrid Drive systems.

- **HIGH EFFICIENCY**

Means less engine power required for the electrical load, directly resulting in less fuel consumption.

- **LONG LIFE BEARINGS**

The 400 Series features two 40mm High-Temperature front ball bearings, capable of withstanding extreme belt loads and temperatures imposed by today's severe applications.

AVAILABLE MODELS:

- 24V- 475, 525, 550 Amps
Negative or Insulated Systems.

APPLICATIONS:

Transit Buses
Motor Coaches

The DelStar Series alternators are an integral charging system of an innovative brushless design. The compact, heavy duty construction, provides increased service life expected to match the longer maintenance intervals of today's engines, while providing a performance level without parallel.

designed for
Transit Bus
and **Motor Coach**

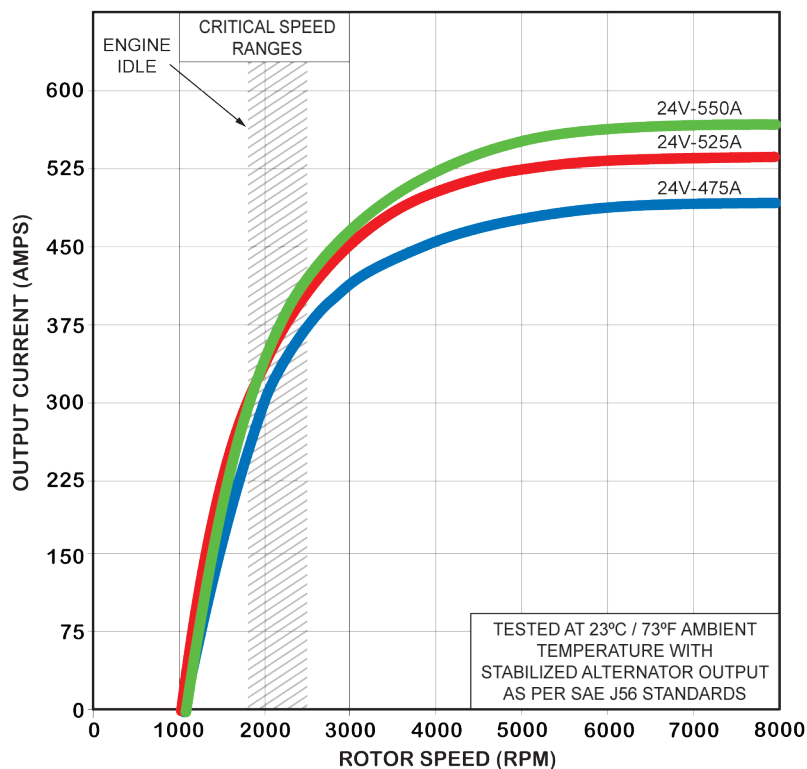


Series 400

SPECIFICATIONS

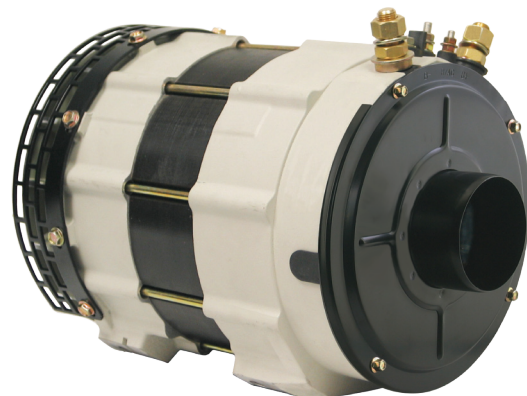
- Cradle mount
- Rotation: Bidirectional
- Relay/AC terminal
- Internal or Remote Voltage Regulator
- Temperature limits:
 - Low - 40°C / -40°F
 - High 93°C / 200°F (with air precleaner)
 - High 110°C / 230°F (with fresh air intake hose)
- Speed limits: 8,000 RPM
- Weight: 94 Lbs. / 42.5 Kg.

PERFORMANCE CURVES

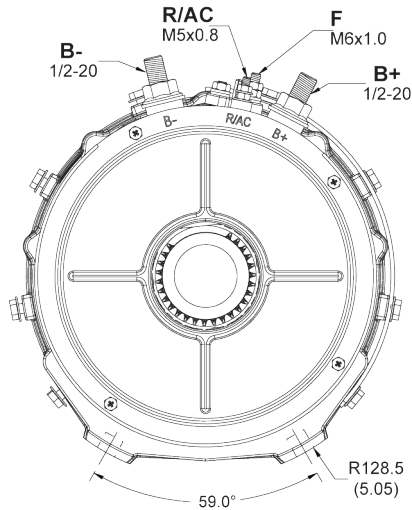


CRITICAL SPEED RANGES

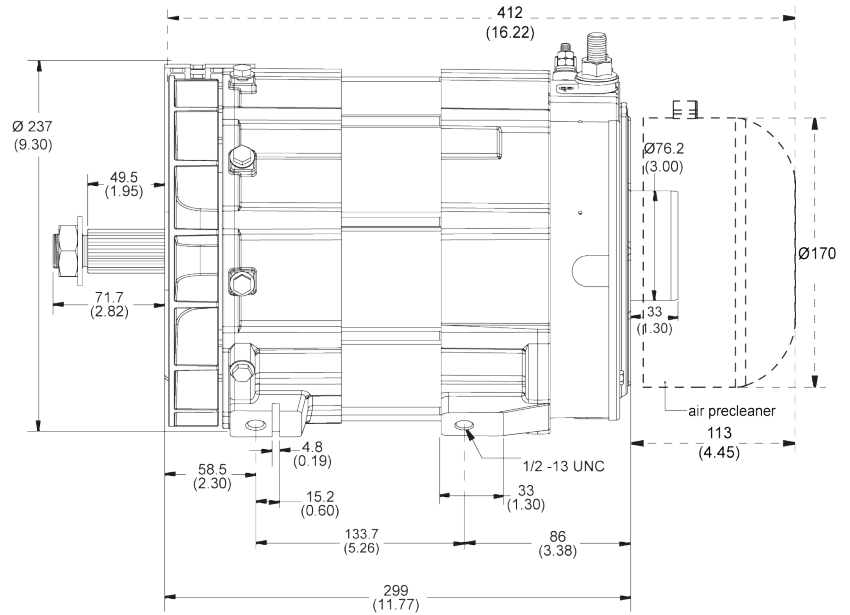
24V	550A	525A	475A
RPM	AMPS	AMPS	AMPS
1800	292	289	262
2000	338	335	303
3000	460	445	403
4000	518	503	452
5000	550	525	475



CONNECTIONS



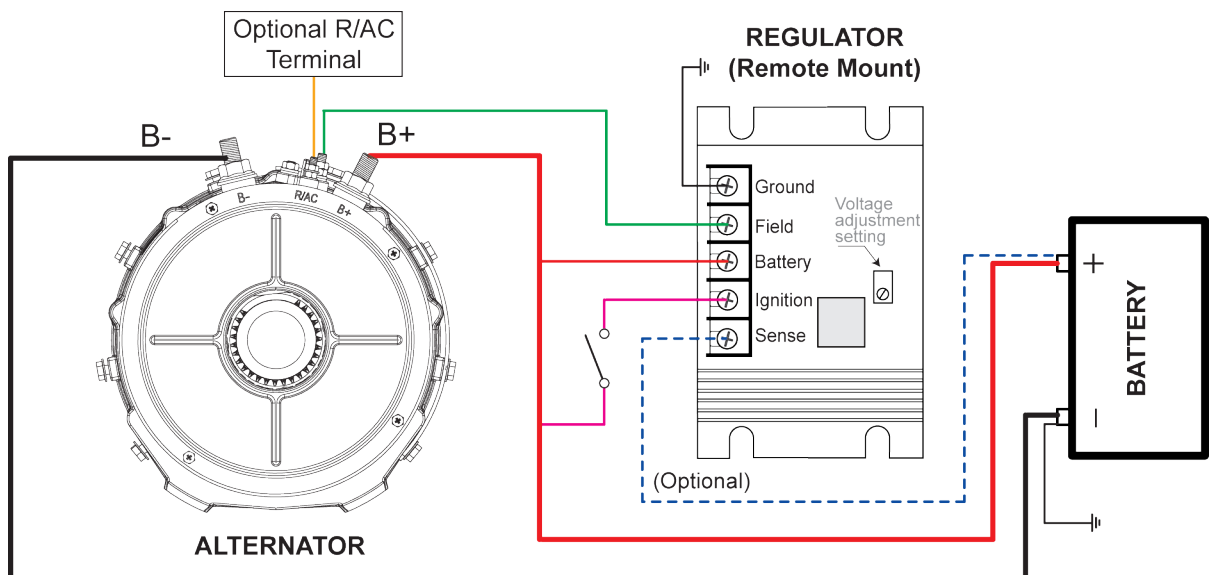
OUTLINE




Dimensions are listed in millimeters over inches.

WIRING DIAGRAM

Typical Configuration



DELSTAR™ Brushless			Delco Remy Brushless		C.E. Niehoff Brushless		EMP Brushless	
Mounting	400 Series Part No.	Amps Output @ 2000 / 5000 rpm	50DN + OIL COOLED Part No.	Amps Output @ 2000 / 5000 rpm	C800 Series Part No.	Amps Output @ 2000 / 5000 rpm	Power 450 Part N.	Amps Output @ 2000 / 6300 rpm
 CRADLE	100-40201	24V 300 / 475A	8600083 8700091	270 / 450A				
	100-40203	24V 300 / 475A w/ HORIZONTAL OUTPUT TERMINALS					Power 450	293 / 450A
	100-40202	24V 335 / 525A			C803 C803D	325 / 500A		
	100-40205	24V 338 / 550A						

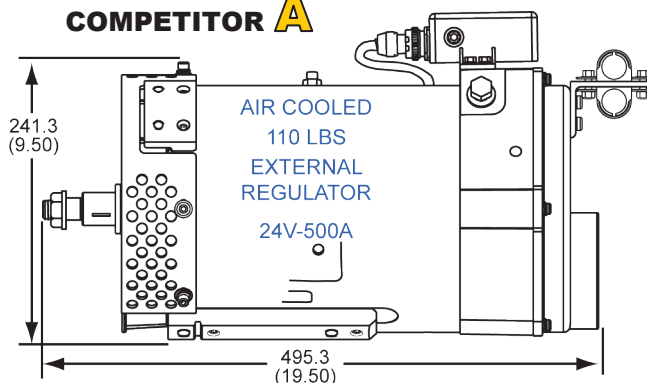
IMPORTANT : Ensure alternator cables are adequate to handle the alternator output current. Voltage drop between Alternator B+ (Output Terminal) and Battery B+ (Positive Terminal) should not exceed 0.5 Volts drop at full alternator output.

COMPARED TO THE REST

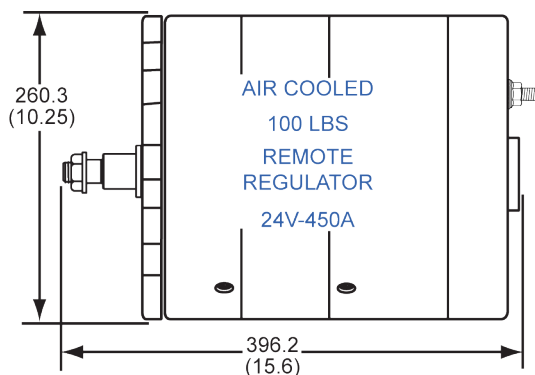
DESCRIPTION	DelStar			A	B	C
VOLTS	24	24	24	24	24	24
AMPS OUTPUT	475	525	550	500	450	450
AMPS @ 2000 rpm	303	335	338	310	293	275
WEIGHT	94 lbs	94 lbs	94 lbs	110 lbs	100 lbs	100 lbs
LENGTH	14.59"	14.59"	14.59"	19.50"	15.6"	17.83"
DIAMETER	9.30"	9.30"	9.30"	9.50"	10.25"	10.00"
COOLING	AIR	AIR	AIR	AIR	AIR	OIL

- LIGHTER WEIGHT
- SMALL SIZE
- MORE AMPS AT ALL CRITICAL SPEED RANGES
- A PERFECT DROP-IN FOR ALL CRADLE MOUNT APPLICATIONS
- SIMPLE TO SERVICE AND UP TO 65% LESS TIME REQUIRED

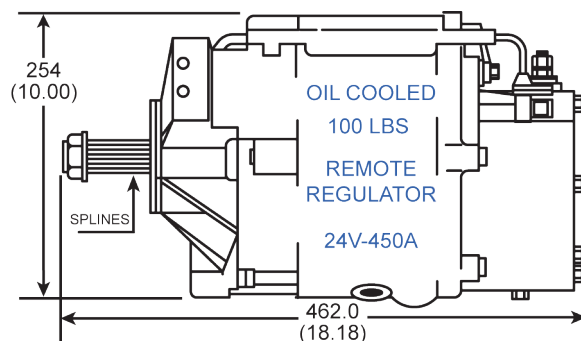
COMPETITOR A



COMPETITOR B



COMPETITOR C



For additional cross reference information visit our website e-Cat: www.dixie-electric.com

CANADA & EXPORT SALES

Dixie Electric Ltd.
517 Basaltic Road
Concord, ON.
Canada L4K 4W8
Tel.: 905-879-0533 800-461-5799
Fax: 905-879-0532
E-Mail: sales@dixie-electric.com
Web Site: www.dixie-electric.com



U.S.A. SALES

Dixie Electric Inc.
5600 Pioneer Creek Drive, Suite D
Maple Plain, MN 55359
U.S.A.

Tel.: 763-475-6629 800-478-0608
Fax: 763-475-6635 800-392-8719
E-Mail: mn.sales@dixie-electric.com
Web Site: www.dixie-electric.us