

PRODUCT FEATURES

- **UNIQUE DUAL ROTOR BRUSHLESS CONSTRUCTION**

Extends the service life and increases durability by eliminating: Brushes, Slip Rings and the Rotating Winding.

- **AIR COOLED**

Air Cooled means eliminating oil lines, potential engine oil contamination and hazardous oil leaks.

- **CLEAN AIR DESIGN**

Engineered for superior reliability, designed to allow clean air to flow directly into the alternator. It is supplied with a "Maintenance Free" rear mounted air precleaner, making the 300 SERIES alternators a simple drop-In and a perfect "Debris Free" installation for all cradle mount applications without the need of additional hoses for ducting clean air supply.

- **HIGH OUTPUT**

Capable of producing 244 Amps @ 2000 rpm or more than 68% of its rated power at engine idle makes this an efficient alternator capable of handling the high electrical load demands at low alternator (rotor) RPM.

- **HIGH EFFICIENCY**

Means less engine power required for the electrical load, directly resulting in less fuel consumption.

- **LONG LIFE BEARINGS**

The 300 Series features two 40mm High-Temperature front ball bearings, capable of withstanding extreme belt loads and temperatures imposed by today's severe applications.

AVAILABLE MODELS:

- 24V- 330, 360 Amps, Negative or Insulated Systems.

APPLICATIONS:

Transit Buses
Motor Coaches

The DelStar Series alternators are an integral charging system of an innovative brushless design. The compact, heavy duty construction, provides increased service life expected to match the longer maintenance intervals of today's engines, while providing a performance level without parallel.

designed for

**Transit Bus
and Motor Coach**

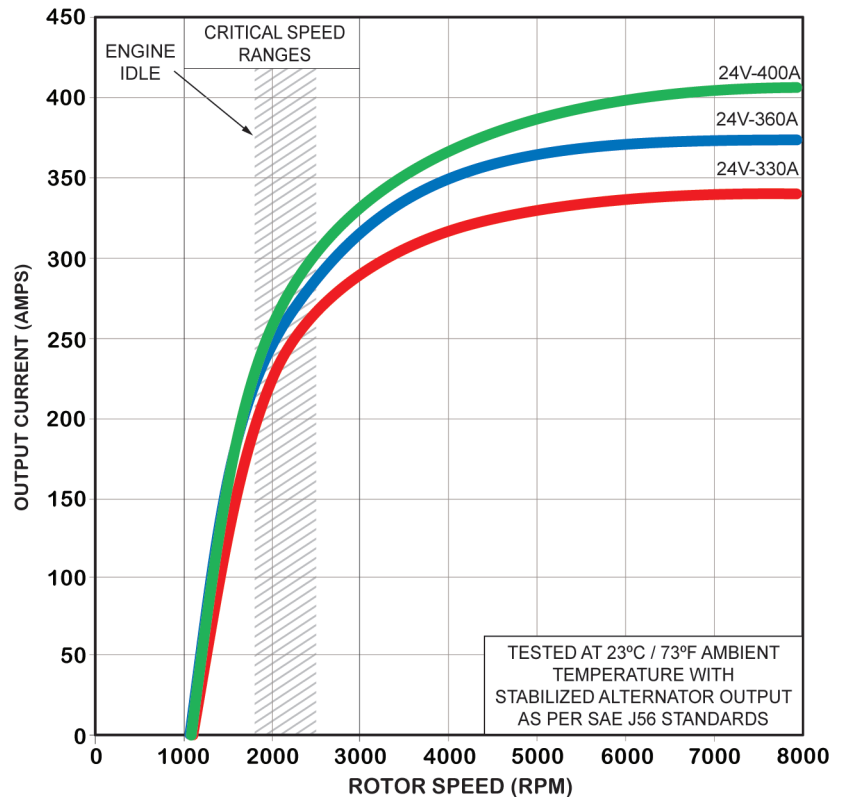


Series 300

SPECIFICATIONS

- Cradle mount
- Rotation: Bidirectional
- Relay/AC terminal
- Internal or Remote Voltage Regulator
- Temperature limits:
 - Low - 40°C / -40°F
 - High 93°C / 200°F (with air precleaner)
 - High 110°C / 230°F (with fresh air intake hose)
- Speed limits: 8,000 RPM
- Weight: 81 Lbs. / 36.7 Kg.

PERFORMANCE CURVES



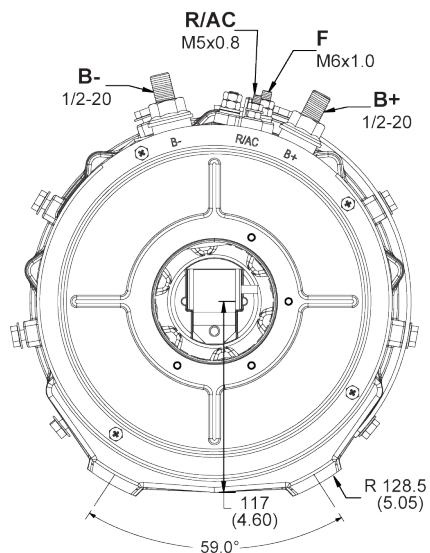
CRITICAL SPEED RANGES

| 24V | 330A | 360A | 400A |
|------|------|------|------|
| RPM | AMPS | AMPS | AMPS |
| 1800 | 200 | 216 | 232 |
| 2000 | 225 | 244 | 262 |
| 3000 | 282 | 315 | 347 |
| 4000 | 315 | 350 | 384 |
| 5000 | 330 | 365 | 400 |

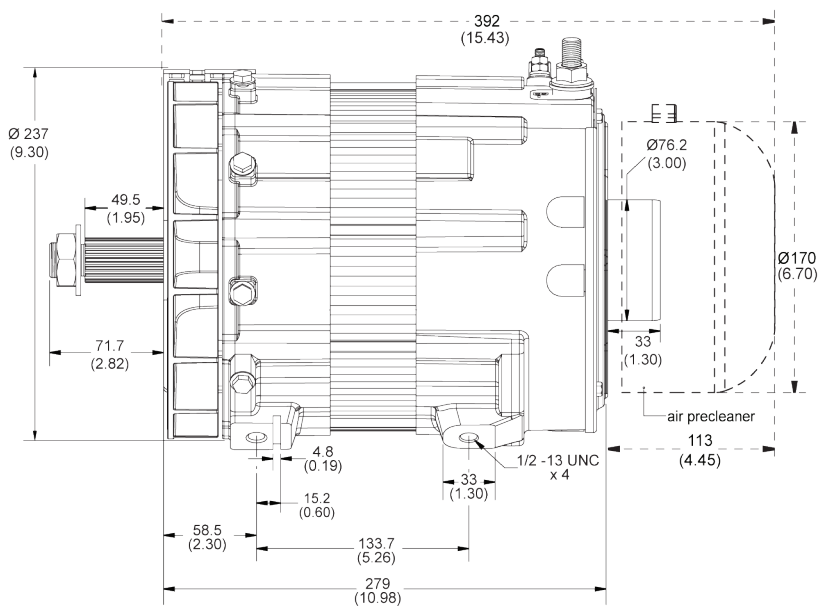
RECOMMENDED FOR:

- Transit Bus
- Motor Coach
- Marine
- Mining
- Industrial

CONNECTIONS



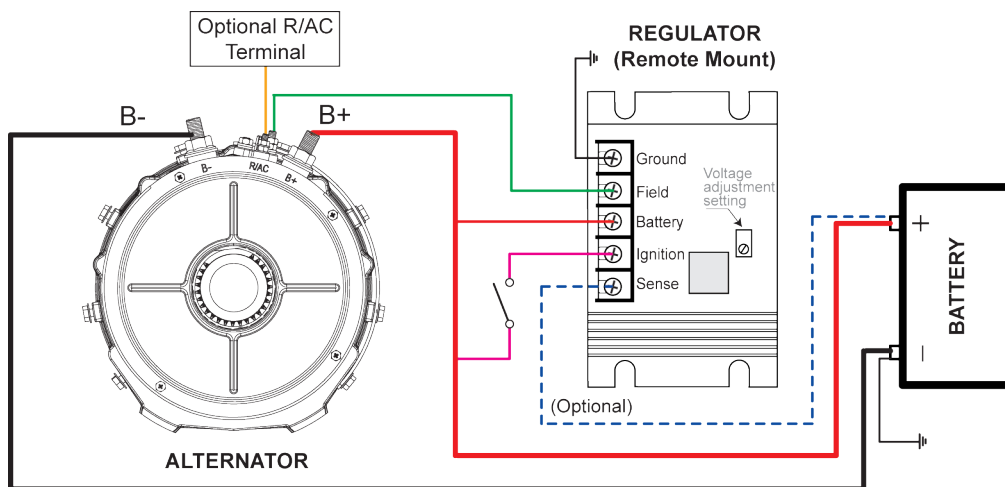
OUTLINE



Dimensions are listed in mm over (in).

WIRING DIAGRAM


Typical Configuration





HD Brushless

Series 300

| DELSTAR® Brushless | | | Delco Remy Brushless | | C.E. Niehoff Brushless | | PennTex Brushless | |
|--|---|-------------------------------|--------------------------------|-------------------------------|------------------------|-------------------------------|---------------------|-------------------------------|
| Mounting | 300 Series Part No. | Amps Output @ 2000 / 5000 rpm | 50DN OIL COOLED Part No. | Amps Output @ 2000 / 5000 rpm | C700 Series Part No. | Amps Output @ 2000 / 5000 rpm | PX-8 Series Part N. | Amps Output @ 2000 / 6000 rpm |
|  CRADLE | 100-30207 | 24V 225 / 330A | 8600191 8700077 10459123 | 210 / 270A | | | PX-833 | 200 / 330A |
| | 100-312071 w/ Internal V.R. w/ 8G Pulley | 24V 225 / 330A | | | C701 | 200 / 300A | | |
| | 100-312091 w/ Internal V.R. w/ 8G Pulley | 24V 245 / 360A | | | C702D C703 C703A | 210 / 350A | | |

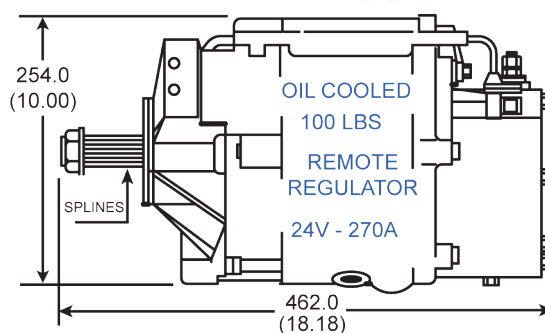
IMPORTANT : Ensure alternator cables are adequate to handle the alternator output current. Voltage drop between Alternator B+ (Output Terminal) and Battery B+ (Positive Terminal) should not exceed 0.5 Volts drop at full alternator output.

COMPARED TO THE REST

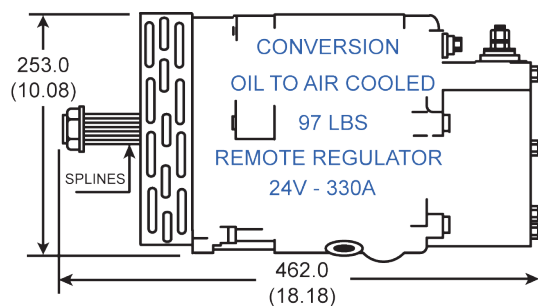
| DESCRIPTION | DelStar | | A | B | C | |
|---------------------------------|---------|--------|--------|--------|--------|--------|
| VOLTS | 24 | 24 | 24 | 24 | 24 | 24 |
| AMPS OUTPUT | 330 | 360 | 270 | 270 | 300 | 350 |
| AMPS @ 2000 RPM | 225 | 244 | 195 | 195 | 200 | 210 |
| WEIGHT | 81 | 81 | 100 | 97 | 89 | 89 |
| LENGTH | 18.25" | 18.25" | 18.18" | 18.18" | 14.90" | 14.90" |
| DIAMETER | 9.30" | 9.30" | 9.50" | 10.08 | 11.25" | 11.25" |
| COOLING | AIR | AIR | OIL | AIR | AIR | AIR |
| SUPPLIED w/ PRECLEANER ATTACHED | YES | YES | N/A | NO | NO | NO |

- LIGHTER WEIGHT
- SMALLER SIZE
- UP TO 20% MORE AMPS
AT ALL CRITICAL SPEED RANGES
- A PERFECT DROP-IN FOR ALL
CRADLE MOUNT APPLICATIONS
- MULTIPLE CHOICES OF OUTPUT
- SIMPLE TO SERVICE AND UP TO
65% LESS TIME REQUIRED

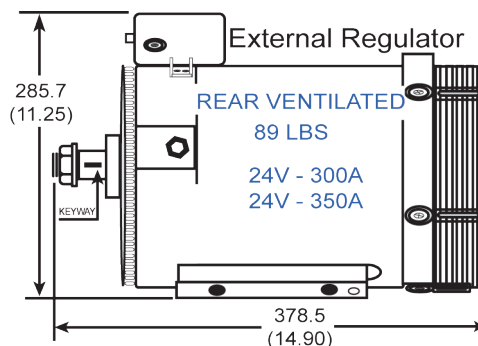
COMPETITOR A



COMPETITOR B



COMPETITOR C



For additional cross reference information visit our website e-Cat: www.dixie-electric.com

CANADA & EXPORT SALES

Dixie Electric Ltd.
517 Basaltic Road
Concord, ON.
Canada L4K 4W8
Tel.: 905-879-0533 800-461-5799
Fax: 905-879-0532
E-Mail: sales@dixie-electric.com
Web Site: www.dixie-electric.com



U.S.A. SALES

Dixie Electric Inc.
5600 Pioneer Creek Drive, Suite D
Maple Plain, MN 55359
U.S.A.

Tel.: 763-475-6629 800-478-0608
Fax: 763-475-6635 800-392-8719
E-Mail: mn.sales@dixie-electric.com
Web Site: www.dixie-electric.us