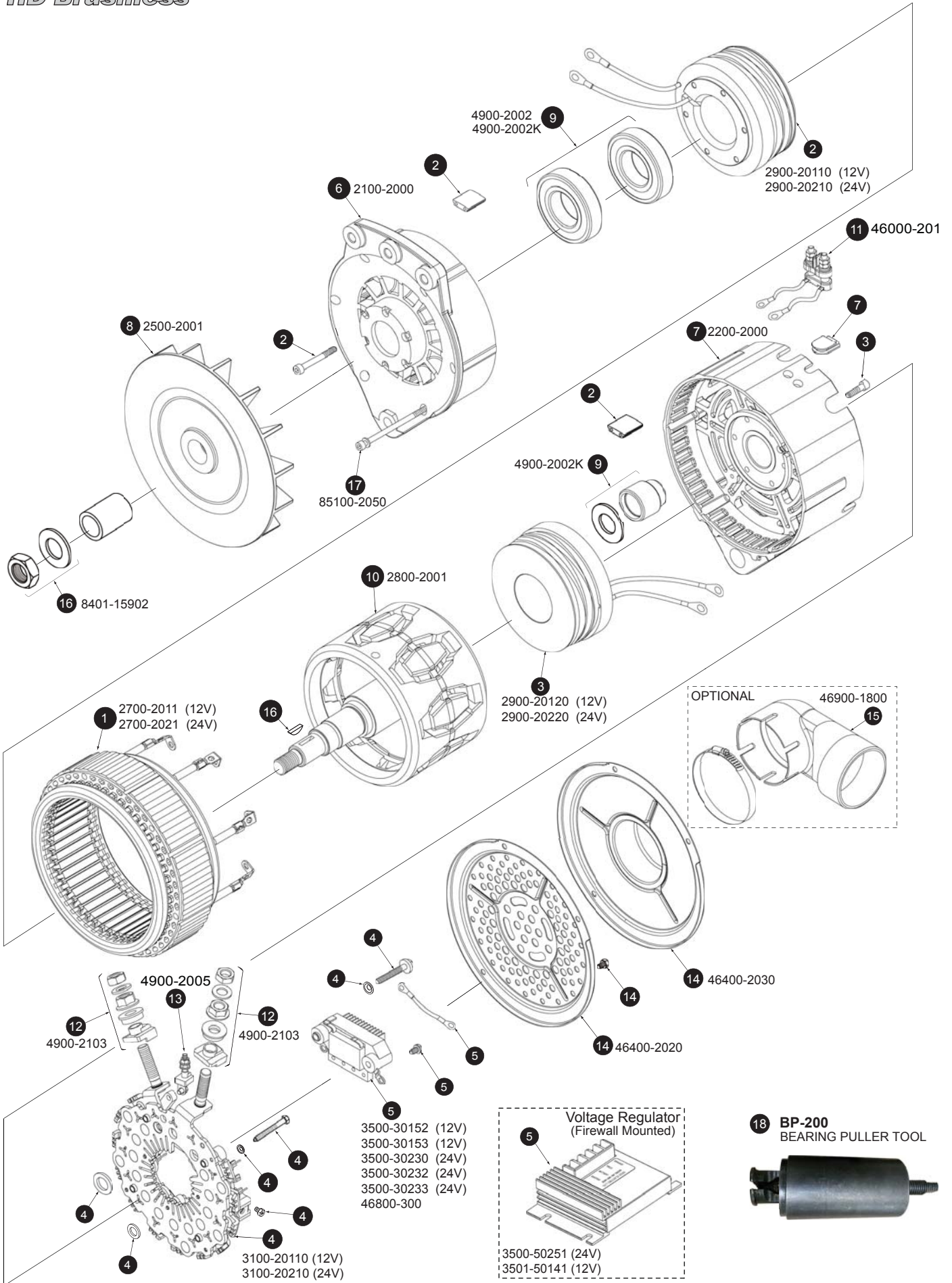


HD Brushless



MAJOR COMPONENTS

MODEL No.	V-Amp @ 2000 / 5000 RPM	STATOR ASSY.	FRONT COIL PKG.	REAR COIL PKG.	RECTIFIER PKG.	REGULATOR OR TERM. BLOCK	FRONT HOUSING ASSY.	REAR HOUSING ASSY.
100-20101	12V-245 / 375A	2700-2011	2900-20110	2900-20120	3100-20120	3500-30152 3500-30153	2100-2000	2200-2000
100-20102	12V-245 / 375A	2700-2011	2900-20110	2900-20120	3100-20120	46800-300 **	2100-2000	2200-2000
100-20201	24V-165 / 260A	2700-2021	2900-20210	2900-20220	3100-20210	3500-30230 *	2100-2000	2200-2000
					3100-20220	3500-30232		
100-20204	24V-165 / 260A	2700-2021	2900-20210	2900-20220	3100-20210	3500-30230 *	2100-2000	2200-2000
					3100-20220	3500-30232		
100-20207	24V-165 / 260A	2700-2021	2900-20210	2900-20220	3100-20220	46800-300 **	2100-2000	2200-2000

* 3500-30230 Used w/ 3100-20210 (Diode Trio type Rectifier)

** Terminal block connector pkg. For firewall mounted voltage regulator use **3501-50141** (12V) or **3500-50251** (24V)

ITEM	PART No.	DESCRIPTION
1	2700-2011	STATOR ASSY. 200 (12V-375A)
1	2700-2021	STATOR ASSY. 200 (24V-260A)
2	2900-20110	COIL PKG., 200 Front (12V-375A)
2	2900-20210	COIL PKG., 200 Front (24V-260A)
3	2900-20120	COIL PKG., 200 Rear (12V-375A)
3	2900-20220	COIL PKG., 200 Rear (24V-260A)
4	3100-20110	RECTIFIER PKG. 200 12V
4	3100-20210	RECTIFIER PKG. 200 24V, w/ Diode Trio
5	3500-30152	V. REGULATOR PKG., 14.2 V. Set
5	3500-30153	V. REGULATOR PKG., 14.2 V. Set (Adjustable)
5	3500-30230	V. REG. PKG., Used w/ Diode Trio type Rectifier
5	3500-30232	V. REGULATOR PKG., 28.0 V. Set
5	3500-30233	V. REGULATOR PKG., 28.0 V. Set (Adjustable)
5	3500-50251	V. REGULATOR, 28.0 V. Set (Adjustable) Firewall Mounted
5	3501-50141	V. REGULATOR, 14.2 V. Set (Adjustable) Firewall Mounted
5	46800-300	TERMINAL BLOCK CONNECTOR PKG.

ITEM	PART No.	DESCRIPTION
6	2100-2000	HOUSING ASSY., 200 Front
7	2200-2000	HOUSING ASSY., 200 Rear
8	2500-2001	FAN, (Bi-directional)
9	4900-2002	BEARINGS PKG. Front (Qty. 2)
9	4900-2002K	BEARING KIT 200 Series (Includes bearing inner race)
10	2800-2001	ROTOR ASSY., 200 22.0mm Ø shaft
11	46000-201	TERMINAL ASSY. 200 Series
12	4900-2103	HARDWARE PKG.
13	4900-2005	TERMINAL KIT (Relay)
14	46400-2020	COVER PLATE PKG. 200 Series
14	46400-2030	COVER PLATE PKG., 200 with 2.75" Ø air intake
15	46900-1800	ELBOW PKG., (360° Rotatable for Air Intake Cover)
16	8401-15902	PULLEY NUT PKG., (5/8-18 Thread)
17	85100-2050	THRU-BOLT PKG (M6 X 1.0 X 145mm L)
18	BP-200	BEARING PULLER TOOL 200 Series

Accessories

18 BP-200
BEARING PULLER TOOL



**Corporate Headquarters
Manufacturing and Distribution**

Dixie Electric Ltd.
517 Basaltic Road
Concord, ON, Canada L4K 4W8
Tel.: 905-879-0533 Fax: 905-879-0532
U.S. 800-563-3933
E-Mail: sales@dixie-electric.com
Web Site: www.dixie-electric.com



**USA
Sales and Distribution**

Dixie Electric Inc.
17100 Medina Road, Suite 100
Minneapolis, MN, U.S.A. 55447-1249
Tel.: 763-475-6629 800-478-0608
Fax: 763-475-6635 800-392-8719
E-Mail: mn.sales@dixie-electric.com
Web Site: www.dixie-electric.com